



ALMERA



Follow Nissan's stories at:

-  facebook.com/NissanThailand
-  youtube.com/NissanThailand
-  instagram.com/NissanThailand
-  twitter.com/NissanThailand

Nissan Motor (Thailand) Co., Ltd.
www.nissan.co.th

P15-05-23-B




New NISSAN ALMERA ALL YOU NEED AT THE SPEED YOU WANT

Imagine bringing your life to a whole new level with **NISSAN ALMERA** designed to meet the needs of all lifestyle choices and destinations. Power response and fun to drive with a powerful **1.0L TURBO** engine. It comes with a new signature color, **Gray Sky Pearl**, a modern exterior, and a sleek look that reflects a remarkable new style that no one can stop you from.

Power response and fast overtaking with

1.0L TURBO engine

Fuel efficiency of

 **23.3** km/l

Maximum power of

100 horsepower

Maximum torque of


152 NM

* Tested according to UN ECE Reg101 Rev.2, NEDC Mode (Combined Conditions)

New! Technology NissanConnect[®] Services

Technology that ensures every aspect of comfort by enabling you to control the vehicle and check vehicle information via a mobile application



-  **In-car SOS and Automatic Emergency Call**
Ensuring your safety and confidence even in emergency situations by pressing a first-in-class SOS button in your car that will bring instant contact from Nissan's emergency support center through the in-car audio system, or it automatically activates in the event of an incident when the airbags are deployed.
-  **Remote Engine Start & Remote Door Lock/Unlock and Status**
Enabling you to remotely start the engine and check the door lock/unlock status via the mobile application from anywhere.
- My Car Finder & Remote Horn and Lights**
Helping you remotely locate your car by flashing the headlights and horn.
-  **Vehicle Health Report**
Providing more comfort and care with a vehicle health report and notification if a malfunction is detected.


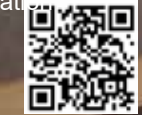

Book a Test Drive [Click](#)

Remark: • Figures are for advertising purposes. Technical specifications may vary depending on the model. • The car in the figure is equipped with the Ignite Package.

NissanConnect[®] Services



Download Application

GET IT ON
Google Play

Download on the
App Store

ALWAYS READY More Comfort - Controls from the app

Remote Door Status and Remote Door Lock/Unlock*
Feel comfortable anywhere, anytime, with the feature that allows you to remotely check the vehicle status and lock/unlock the vehicle via the mobile application.

Remote Horn and Lights
Help you remotely locate your car by flashing the headlights and horn (or only the headlights in a noise-prohibited place).

Remote Engine Start*
Ready for every journey by remotely starting the engine via the mobile application (limit up to 2 times**)

My Car Finder
Help you locate your car via the mobile application.

* The remote control function is controlled by the Security Code for another level of safety.
** After two commands, the vehicle must be started by the push-button ignition switch in the vehicle before the next remote command.

ALWAYS REASSURING Get instant support in the event of an emergency.

The system will automatically connect to the Emergency Support Center when the airbags are deployed.*

Feel more safe and confident with instant support. In the event of accidents in which the airbags are deployed, the system automatically contacts the emergency support center and coordinates assistance (if required).**

Innovative Technology!

NissanConnect[®] Services

Stay connected. More comfort: monitor vehicle status and control your car via the mobile application. Emergency support can be sought via the SOS button, within arm's reach.



ALWAYS REMINDING Showing the vehicle's status

Vehicle Health
Enabling you to check the vehicle's status via the mobile application.

Maintenance Reminder
Let the application remind you when the next maintenance service is due.

Vehicle Health Report & Issue Notification
Notify you via the mobile application if a malfunction is detected.

Speed Alert
Brings you to another level of safety by alerting you when you exceed the limited speed via the mobile application.

Driving History
View your vehicle usage report daily, monthly, or yearly via the mobile application.

Area Alert
You can set a geographical driving boundary around any area via the mobile application and receive an alert whenever your vehicle enters or exits the area.

Theft Alert
When an anti-theft alarm is triggered, get notified via the application. Enabling you to take immediate action and keep track of the vehicle.

Curfew Alert
Set a curfew and get a notification if the vehicle is driven during the curfew time set via the mobile application.

In-Car SOS Call*
In an emergency, just press the first-in-class SOS button to get instant contact with Nissan's emergency support center through the in-car audio system, enabling you to feel safe in every situation.**

*Without enrollment in NissanConnect Services, the vehicle cannot send location information, and the customer must inform the location during the emergency call to get support. ** Please note that the Automatic Emergency Call and In-Car SOS call function cannot be fully used without enrollment in the NissanConnect Services app, and in conditions such as when the cellular network is not available, the vehicle moves outside the service area, the Telematic Control Unit (TCU) is connected to the system or where the cellular network is available, the line is busy, etc. For more information, please visit: <https://www.nissan.co.th/aftersales/owner-benefits/nissanconnect-services.html>

Remark: • As a special offer, customers can use NissanConnect Services for the first three years. After that, customers need to pay service fees. For more information, please visit: <https://www.nissan.co.th/aftersales/owner-benefits/nissanconnect-services.html> • Figures are for advertising purposes. Technical specifications may vary depending on each model. • The car in the figure is equipped with the Ignite Package.



SPORTY & MOST SPACIOUS WITH FULL FUNCTIONS

An all-around sporty cabin, suitable for every lifestyle
A whole new premium sporty look in a spacious, comfortable, and multi-functional passenger cabin with the dark blue console and sporty seats that match with new Nissan steering wheel logo. It also comes with a **Wireless Charger** and **Cruise Control** Technology for the best comfort on the road.



NissanConnect®
The latest technology that connects the new Nissan Almera with your smartphone
Technology that ensures every aspect of comfort by connecting smartphones with **Apple CarPlay** and **Android Auto***, enabling the use of mobile applications via the car's display and audio system for a smooth experience, together with the **Navigation System** via **Google Map** and the **Voice Recognition** system for a whole level of joy in every journey



NEW **Wireless Charger**
A Wireless Charger* provides you with more comfort on every journey.



NEW **Cruise Control**
Cruise Control Technology
The speed of the car is controlled by the cruise control system, which can relieve the driver's fatigue when driving long distances.

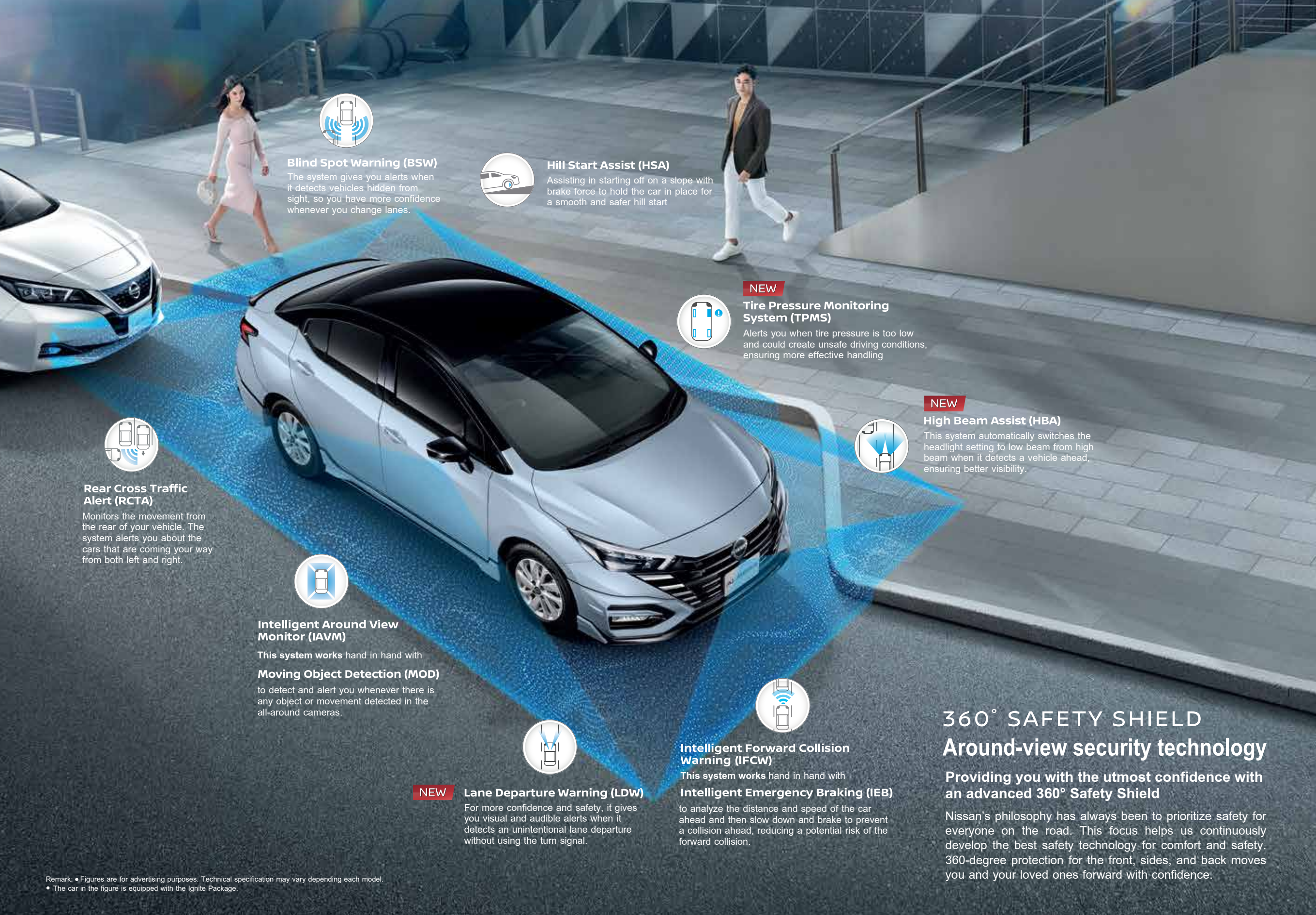


NEW **Intelligent Key**
Intelligent Key
More convenient with the newly designed and functional Intelligent Key



Luggage Room
Multi-purpose storage trunk
Spacious and able to store golf bags, suitcases, or several pieces of extra-large luggage

*Only for compatible smartphones



Blind Spot Warning (BSW)

The system gives you alerts when it detects vehicles hidden from sight, so you have more confidence whenever you change lanes.



Hill Start Assist (HSA)

Assisting in starting off on a slope with brake force to hold the car in place for a smooth and safer hill start



NEW

Tire Pressure Monitoring System (TPMS)

Alerts you when tire pressure is too low and could create unsafe driving conditions, ensuring more effective handling



NEW

High Beam Assist (HBA)

This system automatically switches the headlight setting to low beam from high beam when it detects a vehicle ahead, ensuring better visibility.



Rear Cross Traffic Alert (RCTA)

Monitors the movement from the rear of your vehicle. The system alerts you about the cars that are coming your way from both left and right.



Intelligent Around View Monitor (IAVM)

This system works hand in hand with Moving Object Detection (MOD) to detect and alert you whenever there is any object or movement detected in the all-around cameras.



NEW

Lane Departure Warning (LDW)

For more confidence and safety, it gives you visual and audible alerts when it detects an unintentional lane departure without using the turn signal.



Intelligent Forward Collision Warning (IFCW)

This system works hand in hand with Intelligent Emergency Braking (IEB) to analyze the distance and speed of the car ahead and then slow down and brake to prevent a collision ahead, reducing a potential risk of the forward collision.

360° SAFETY SHIELD Around-view security technology

Providing you with the utmost confidence with an advanced 360° Safety Shield

Nissan's philosophy has always been to prioritize safety for everyone on the road. This focus helps us continuously develop the best safety technology for comfort and safety. 360-degree protection for the front, sides, and back moves you and your loved ones forward with confidence.

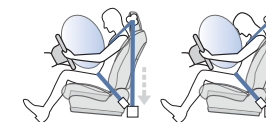
DRIVE CONFIDENTLY WITH FULL TECHNOLOGY SAFETY

Feel confident and safe on every journey.

Nissan's philosophy has always been to prioritize safety for everyone on the road. This focus helps us to continuously develop the best 360-degree safety shield to provide you and your loved ones the utmost confidence and safety on every journey.

Pretensioner and Load Limiter Seatbelts

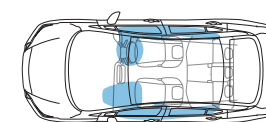
The ELR seatbelt with 3-point lock is adjustable to fit each driver. In case of an emergency, the system will restrain the passengers and the driver's torso to their seats immediately upon collision. The seatbelt will then loosen the restraining force to minimise chest injuries when the airbags are activated.



SRS Airbags

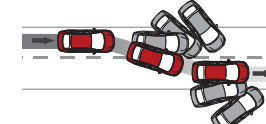
6-point air bag

When unforeseen moments occur, the front SRS airbag, side and front airbags, and side curtain airbags will inflate automatically, with the help of the seatbelt, to reduce the impact caused to the driver and front passengers from a front collision.

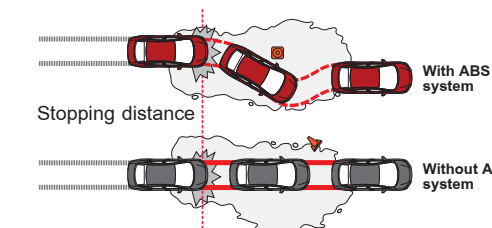


Vehicle Dynamic Control (VDC)

Maintaining a stable balance of the car upon sudden movement. Turn your car with confidence and take full control, even at critical moments.



Safety ABS EBD and BA Brake Assist



Brake Assist (BA)

Helps improve the wheel's brake power and decreases the braking distance to ensure

Anti-lock Braking System (ABS)

Ensures peace of mind at every moment with the Anti-lock braking system, which helps control the car's direction and maneuvers away from the obstacles at critical moments

Electronic Brake Force Distribution (EBD)

Improves the efficiency of the brake system, reduces the brake distance, and restores the car's balance upon sudden braking

THE NEXT LEVEL OF SPORTY
PREMIUM DESIGN

NISSAN Genuine Accessory providing sport design,
sleek from every angle perfect design with superior
standards quality guarantee by Nissan Motor (Thailand).



INTERIOR



Kicking Plate



Luggage Tray



Dual Floor Carpet



Sport Pedal Set



Trunk Net

EXTERIOR



Body Side Molding



Front Grille (Black)



Back Door Garnish



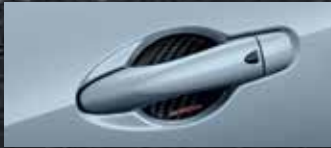
Door Visor



Door Mirror Cover (Black)



Trunk Spoiler



Door Handle Protector



Roof Molding Shark Fin (Black)



Hood Emblem ALMERA (Glossy Black)



Hood Emblem ALMERA (Chrome)

TECHNOLOGY Taking the joy of driving to the next level



Alloy Wheel 16"



Exhaust Pipe Finisher



Car Cover



Drive Recorder (DVR)



Back Sensor 2 Points

IGNITE PACKAGE 4 Items



Front Skirt



Side Skirt (left, right)



Rear Skirt



Trunk Spoiler

SUPREME PACKAGE 4 Items



Door Visor



Door Handle Protector



Dual Floor Carpet



Kicking Plate

DELUXE PACKAGE 4 Items



Roof Molding Shark Fin (Black)



Exhaust Pipe Finisher



Luggage Tray



Sport Pedal Set

NISSAN Genuine Accessories

NISSAN Warranty Policy

Quality warranty for max. 3 years or 100,000 kilometers, whichever occurs first*

Remark • The color of the physical accessories may vary from the illustration due to the printing process • The 16" Alloy wheel's price is per wheel (recommended size 205/55 R16), excluding the wheel cap. • The WiFi Drive Recorder includes a 16 GB SD Card, but its cable must be separately purchased. • The Roof Molding Shark Fin (Black) and SUPREME PACKAGE are not applicable to E variant. • Each model has different standard equipment. Please check/confirm the details of each model before purchasing. • Nissan's Genuine accessories can be paid in installments with the car's balance via Nissan Leasing (Thailand) Co., Ltd. • The listed price is exclusive of 7% VAT. • The company reserves the right to change the price without prior notice* Warranty period for Nissan's genuine accessories calculated from the remaining warranty period of the vehicle, commencing on the date of installation of that genuine accessory. In case the the remaining warranty period of the vehicle is less than one year (or 20,000 km) from the date of installation of genuine accessory, the warranty of that genuine accessory will equal to one year (or 20,000 km).

For inquiries

IDENTIFY YOURSELF
MODEL LINEUP

Request a Quote [Click](#)



V Model



EL Model



E Model



IGNITE PACKAGE



VL Model

BODY COLORS

Mono-tone						Two-tone		
Storm White	Radiant Red	Black Star	Gun Metallic	Night Blue	Gray Sky Pearl	Gray Sky Pearl with Black Roof	Storm White with Black Roof	Gun Metallic with Black Roof
VL, V, EL, E Model	VL, V, EL Model	VL, V, EL, E Model	VL, V, EL, E Model	VL, V, EL Model	VL, V Model	VL Model	VL Model	VL Model

Remark : • The two-tone VL, CVT Model has a glossy black roof and black mirrors.

INTERIOR COLORS & SEAT MATERIAL



Standard Model



VL Model



V Model



EL Model



E Model

STYLISH PACKAGE

Black and dark blue interior, decorated with silver and Piano Black material

Black and dark blue interior, decorated with silver and Piano Black material

Black interior, decorated with silver and Piano Black material

Black interior, decorated with silver and black material

Black and dark blue interior, decorated with silver and Piano Black material, decorated at the side with dark blue synthetic leather and silver molding

Remark: • The figures are for advertising purposes. Technical specification may vary depending on each model. • **Stylish Package** is available for VL model only, distributed by authorized Nissan dealers, and installed by Siam Motor Logistics Co., Ltd. The **Stylish Package** is optional, including (1) Side Trim Panel with dark blue synthetic leather, and (2) Silver Door Molding. Customers shall have the right to refuse installation. • Warranty guaranteed by Nissan Motor (Thailand). • Warranty up to 3 years or 100,000 kilometers (whichever occurs first)

SPECIFICATIONS

Model		New NISSAN ALMERA				
		1.0L TURBO				
		E	EL	V	VL	
Dimension and Weight						
Overall Length	mm	4,495				
Overall Widht	mm	1,740				
Overall Height	mm	1,460				
Wheelbase	mm	2,605				
Wheel track	Front	mm	1,525			
	Rear	mm	1,535			
Minimum Ground Clearance		mm	135			
Minimum Turning Radius		m	5.2			
Approximated vehicle weight		kg	1,073	1,079	1,073	1,079
Engine						
Model		HRA0				
Type		DOHC				
Ignition System		Indirect Injection				
Bore and stroke		mm	72.2x81.3			
Displacement		cc	999			
Max power		PS (kw)/rpm	100 (74)/5000			
Max torque		Nm (kgm)/rpm	152 (15.5)/2400-4000			
Compression ratio			9.5 +/-0.2			
Fuel tank capacity		l	35			
Idling Stop			●			
Transmission system						
Transmission type		XTRONIC CVT with D-Step Logic (Hydraulic + Mechanical)				
Gear Ratios		4.0062-0.4580				
Reverse		3.7708				
Final Drive		3.9247				
Suspension						
Front		Independent MacPherson Struts with Stabilizer				
Rear		Torsion Beam Type with the Coil Spring				
Steering						
Steering type		Rack and pinion with electric power steering (EPS)				
Brake system						
Front		Ventilated Disc Brake				
Rear		Drum Brake				
Wheel and Tires						
Tire Size		195/65 R15				
Wheel Size		Steel wheel with full cover 15" x 5.5J	Alloy wheel 15" x 5.5J			
Spare Tire		Temporary spare tire			Repair Kit	

STANDARD EQUIPMENT





Model		New NISSAN ALMERA			
		1.0L TURBO			
		E	EL	V	VL
Exterior					
Chromed Front Grille		●	●	●	●
Body-colored front and rear Bumpers		●	●	●	●
Door handles		Body-colored			
Halogen Headlamps		●	●	-	-
LED Headlights with LED Signature Light		-	-	Auto On-Off system	Auto On-Off system
LED Front Fog Lamps		-	-	-	●
Side Turn Lamps on Door Mirrors		●	●	●	●
LED Rear Combination lamp with Signature Light		●	●	●	●
Door Mirrors	Electrically adjustable	●	●	●	●
	Electrically foldable	●	Automatically foldable when locking		
Color		Body-colored			
Variable Adjustment and Intermittent Front Wipers		●	●	●	●
Rear Window Defogger with Timer			●	●	●
Antenna		Short antenna	In-Glass Type Antenna		

Nissan Motor (Thailand) Co., Ltd. reserves the rights to modify the specifaicon and the equipment detail without prior notice.

●with -without

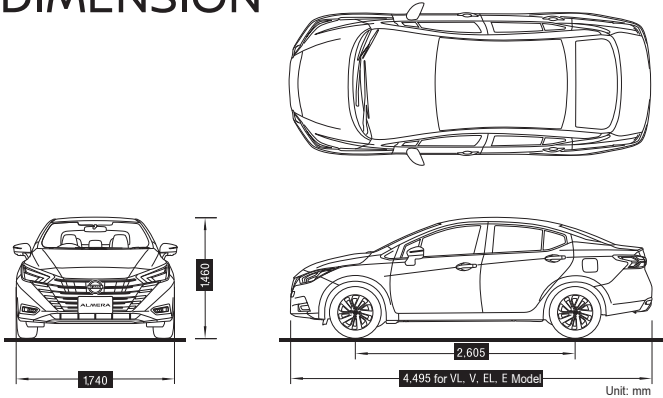
NISSAN Customer Promise



- **1. Trust** estimates the service's cost and request a confirmation from customers first
- **2. Confident** 1-year warranty of repairment, parts and services for a year or 20,000 km
- **3. Comfortable** We provide a backup car for free*
- **4. Warm** We provide emergency service and call center 24-7. **

Remark: *Only for services related to products quality that takes more than 24 hours of service time (excluding service center's holidays and the delivery period of spare parts which may take up to three days) or in case of having no required spare part in the Nissan's warehouse. The company does not confirm the order within 24 hours upon receiving the order for both above-mentioned cases. Only for vehicles within the warranty period for a new vehicle of 3 years/100,000 km (excluding the extension, additional purchase of warranties, as well as accident cases)** 24-7 emergency service for a new vehicle with up to 3 years/100,000 km warranty or a free 6-month emergency service for vehicles that the warranties have been expired but received the periodical maintenance at Nissan authorized dealers and replaced with genuine spare parts (excluding the Nissan's alternative genuine spare parts) | Conditions are based on the company.

DIMENSION



STANDARD EQUIPMENT

Model		New NISSAN ALMERA			
		1.0L TURBO			
		E	EL	V	VL
Interior		Black			
Interior Color		Black			
Seat Material		Black fabric with dark blue trim		Black synthetic leather	
Driver Seat Height Adjustment		●	●	●	●
Front Console Decoration		Black Injection material with Stitch		Dark Blue Synthetic Leather with Stitch	
A/C Ventilation Decoration		Decorated with silver and black material		Decorated with silver and Piano Black material	
Center Console Decoration		Decorated with black material		Decorated with Piano Black material	
Gear Knob Decoration		Urethane		Synthetic Leather with Silver Decoration	
Front Center Armrest with Storage Box		-		Synthetic Leather	
Sporty Shape Steering Wheel and Telescopic Adjustment	Wrapped Material	Urethane with Matte Chorme Decoration		Genuine Leather with Matte Chorme Decoration	
	Audio and Hands-Free Phone Steering Switch	●	-	●	●
	TFT Display Control Switch	-	-	●	●
	Cruise Control Switch	-	●	●	●
Intelligent Key (I-Key)		●	●	●	●
Remote Engine Start Switch on Intelligent Key		-	-	●	●
Push Start Button		●	●	●	●
Fine Vision Analogue Meter		●	●	●	●
Fine Vision with 7" TFT Digital Meter		-	-	●	●
Multi-information Display (MID)		●	●	-	-
7" Advanced Drive-Assist Display		-	-	●	●
Outside Temperature Meter		-	-	●	●
Power windows with Anti-jam Protection (Driver Side)		●	●	●	●
Front Driver and Passenger Sun Visors with Vanity Mirrors		●	●	●	●
Frameless rearview mirror		-	-	●	●
Synthetic Leather wrapped Door Panel		-	Front	Front-rear	Front-rear with threaded seams
Chromed Interior Door Handles		-	-	●	●
Seat Back Pocket on Front Passenger Seat		●	●	●	●
Front Seat Headrests		●	●	●	●
Rear Seat Headrests		●	●	●	●
Front Map Lamps		●	●	●	●
Room Lamp		●	●	●	●
Luggage Room Lamp		●	●	●	●
Front Cup Holders (2 Positions)		●	●	●	●
Bottle Holders on Front and Rear Door Panel (4 Positions)		●	●	●	●
Glove Box		●	●	●	●
Assist Grips 3 Positions (1xFront Passenger, 2xRear Passenger)		●	●	●	●
Manual control Air-Condition System		●	-	-	-
Automatic Air-Condition System		-	●	●	●
12V Power Outlet (number)		2	1	1	1
Standard Audio for AM/FM, Bluetooth, USB and AUX-in		●	●	-	-
NissanConnect	Infotainment system with AM / FM / Bluetooth / USB Connection / AUX-in NissanConnect Services**	-	-	8" Touch Screen, Apple CarPlay and Android Auto supported*	8" Touch Screen, Apple CarPlay and Android Auto supported*
Bluetooth Hands-free Phone Connection		●	●	●	●
Wireless Charger		-	-	●	●
Speaker number		4	4	6	6
Safety and Security					
Front Dual SRS Airbags		●	●	●	●
Side Airbags		●	●	●	●
Side Curtain Airbags		●	●	●	●
Anti-lock Braking System (ABS)		●	●	●	●
Electronic Brake Force Distribution System (EBD)		●	●	●	●
Brake Assist (BA)		●	●	●	●
Immobilizer system		●	●	●	●
Anti-theft alarm		●	●	●	●
Central Lock Control Switch		●	●	●	●
3-Point ELR Driver Double Pre-tensioner Seatbelts with Load Limiter		●	●	●	●
3-Point ELR Front Passenger Single Pre-tensioner Seatbelts with Load Limiter		●	●	●	●
3-Point ELR Rear Seatbelts (3 Positions)		●	●	●	●
ISOFIX		●	●	●	●
Child Lock		●	●	●	●
Zone Body Concept Structure		●	●	●	●
High Mount Stop Lamp		●	●	●	●
360° Safety Shield					
Vehicle Dynamic Control (VDC)		●	●	●	●
Hill Start Assist (HSA)		●	●	●	●
Intelligent Forward Collision Warning (IFCW)		-	●	●	●
Intelligent Emergency Braking (IEB)		-	●	●	●
Intelligent Around View Monitor (IAVM)		-	-	●	●
Moving Object Detection (MOD)		-	-	●	-
Blind Spot Warning (BSW)		-	-	-	●
Rear Cross Traffic Alert (RCTA)		-	-	-	●
Lane Departure Warning (LDW)		-	-	-	●
High Beam Assist (HBA)		-	-	-	●
Tire Pressure Measurement Sensor (TPMS)		-	-	-	●
NissanConnect Services**					
IN-CAR SOS CALL and reporting your car location** through the emergency contact center in case of accidents or emergency situations		-	-	●	●
Automatic Emergency call from car when Airbags deploy**		-	-	●	●
Remote Engine Start via Application		-	-	●	●
Remote Horn and Lights via Application		-	-	●	●
Remote Door Status and Remote Door Lock/Unlock via Application		-	-	●	●
My Car Finder via Application		-	-	●	●
Area/Speed/Curfew Alert on Application		-	-	●	●
Theft Alert on Application		-	-	●	●
Vehicle Health Report and Issue Notification on Application		-	-	●	●
Maintenance Reminder on Application		-	-	●	●

Nissan Motor (Thailand) Co., Ltd. reserves the rights to modify the specifications and the equipment detail without prior notice. *Only for supported smartphone. ** Customers shall download the NissanConnect Services app and use the internet to register for services, using smartphones (1) Android V4.3 or later, and (2) Apple iOS v.11.0 or later*** If customers do not register, the eCall is still available, but customers shall provide their car location by themselves for support. ● Every Nissan car have 3-years warranty or 100,000 kilometre (whichever comes first). ● Nissan Almera, an efficient fuel-saving car, compatible with 91 and 95 Benzene Octane fuel, 91 and 95 Gasohol, and E20. ● 3 years of 24-7 Offsite emergency service for new Nissan owners. Call 02-305-8432

●with -without

