



# MY26 X-TRAIL

## Specifications

Specifications	e-POWER						
	ST	ST-L	TI	TI-L	ST-L	TI	TI-L
Engine							
2.5 Litre DOHC 16-valve direct injection 4 cylinder petrol engine	•	•	•	•			
Power (kW @ rpm)	135 @ 6,000						
Torque (Nm @ rpm)	244 @ 3,600						
e-POWER with 1.5 Litre 16-valve direct injection 3 cylinder petrol engine					•	•	•
Variable compression turbo					•	•	•
e-POWER electric powertrain					•	•	•
Power (kW, front / rear electric motors)					150/100 (Total system output 157)		
Torque (Nm, front / rear electric motors)					330/195 <sup>o</sup>		
e-POWER internal combustion engine					•	•	•
Power (kW @ rpm)					106 @ 4,400		
Torque (Nm @ rpm)					250 @ 2,400		
Drivetrain							
Continuously Variable Transmission (CVT) with paddle shifters	•	•	•	•			
Electronic shift by wire	•	•	•	•	•	•	•
Front wheel drive (FWD)	•	•					
Drive mode selector with 3 modes (Auto, Eco, Sport)	•	•					
Intelligent 4x4	◦ (4x4 only)	◦ (4x4 only)	•	•			
Drive & terrain mode selector with 5 modes (Auto, Eco, Sport, Snow, Off-Road)	◦ (4x4 only)	◦ (4x4 only)	•	•	•	•	•
e-4ORCE electric all-wheel-drive					•	•	•
e-Pedal Step					•	•	•
Fuel (FWD/4x4)							
Fuel tank capacity (Litres)	55						
Fuel consumption, Combined Cycle (FWD/4x4, Litres/100km) <sup>a</sup>	7.4/7.8		7.8		6.1		
Fuel consumption, Urban (FWD/4x4, Litres/100km) <sup>a</sup>	9.9 / 10.0		10.0		6.4		
Fuel consumption, Extra Urban (FWD/4x4, Litres/100km) <sup>a</sup>	6.1 / 6.5		6.5		6.0		
CO2 emission, Combined Cycle (g/km) <sup>a</sup>	174/183		183		139		
Fuel requirement (minimum/recommended, RON)	91/91				91/95		
Brakes							
Front & rear disc brakes	•	•	•	•	•	•	•
Anti-Lock Braking System (ABS)	•	•	•	•	•	•	•
Electronic brake force distribution	•	•	•	•	•	•	•
Brake assist	•	•	•	•	•	•	•
Electronic parking brake	•	•	•	•	•	•	•
Hill Start Assist	•	•	•	•	•	•	•
Hill Descent Control	◦ (4x4 only)	◦ (4x4 only)	•	•	•	•	•
Suspension and steering							
Independent front suspension	•	•	•	•	•	•	•
Independent multi-link rear suspension	•	•	•	•	•	•	•
Front & rear stabiliser bars	•	•	•	•	•	•	•
Dual pinion electric power steering	•	•	•	•	•	•	•

Nissan X-TRAIL specifications

					e-POWER		
	ST	ST-L	Ti	Ti-L	ST-L	Ti	Ti-L
Dimensions							
Exterior							
Overall length (mm)					4,690		
Overall width (mm, including mirrors)					2,065		
Overall height (mm, unladen)					1,725		
Wheelbase (mm)					2,705		
Track width (mm, front/rear)					1,585/1,590		1,575/1,580
Ground clearance unladen (mm, between axles)	205				187		
Turning circle (m, curb-to-curb)					11.1		
Interior							
Head room (mm, first row/second row)	1,050/1,000		999/960		1,050/1,000	999/960	
Leg room (mm, first row/second row)					1,095/892		
Shoulder room (mm, first row/second row)	1,451/1,422			1,451/1,398	1,451/1,422		1,451/1,398
Hip room (mm, first row/second row)					1,374/1,274		
5-seat cargo capacity: second row upright (Litres, to roof)	585				575		
7-seat cargo capacity: second row upright/third row folded flat (Litres, to roof)	465						
Weights (FWD/4x4)							
Gross Vehicle Mass■ (kg)	2,040/2,295		2,135		2,380		
Kerb mass¹ (kg)	1,535/1,650	1,571/1,670	1,670	1,678	1,855	1,885	1,891
Maximum braked towing capacity² (kg)	2,000				1,650		
Maximum unbraked towing capacity² (kg)					750		
Maximum roof load (kg)					100		
Safety and security							
Intelligent 3D Around View® Monitor with Moving Object Detection, Skeleton Hood and T-Junction View		•	•	•	•	•	•
ProPILOT³		•	•	•	•	•	•
Rear view camera	•	•	•	•	•	•	•
Rear parking sensors	•	•	•	•	•	•	•
Front parking sensors		•	•	•	•	•	•
Intelligent Forward Collision Warning	•	•	•	•	•	•	•
Intelligent Emergency Braking with junction assist & pedestrian/cyclist detection	•	•	•	•	•	•	•
Intelligent Rear Automatic Braking	•	•	•	•	•	•	•
Rear Cross Traffic Alert	•	•	•	•	•	•	•
Blind Spot Warning	•	•	•	•	•	•	•
Intelligent Blind Spot Intervention	•	•	•	•	•	•	•
Lane Departure Warning	•	•	•	•	•	•	•
Intelligent Lane Intervention	•	•	•	•	•	•	•
Intelligent Driver Alert	•	•	•	•	•	•	•
Intelligent Cruise Control	•	•	•	•	•	•	•
Traffic Sign Recognition	•	•	•	•	•	•	•
Tyre Pressure Monitoring System		•	•	•	•	•	•
Trailer sway control	•	•	•	•	•	•	•
Speed limiter	•	•	•	•	•	•	•
Vehicle Dynamic Control (VDC) with Traction Control System (TCS)	•	•	•	•	•	•	•
Acoustic Vehicle Alerting System (low speeds up to 30 km/h)					•	•	•
Rear seat (door) alert	•	•	•	•	•	•	•
Temporary use spare wheel and tyre	•	•	•	•			
Tyre repair kit					•	•	•
Airbags							
Front seat airbags (driver & front passenger)	•	•	•	•	•	•	•
Seat side airbags (driver & front passenger)	•	•	•	•	•	•	•
Front row far side airbag (centre)	•	•	•	•	•	•	•
Side curtain airbags (driver & passenger side)	•	•	•	•	•	•	•
Comfort and convenience							
7.0" TFT Advanced Drive-Assist Display instrument cluster	•	•			•		
12.3" TFT Advanced Drive-Assist Display instrument cluster			•	•		•	•
10.8" Head-Up Display			•	•		•	•
Air-conditioning	•						

Nissan X-TRAIL specifications

	e-POWER						
	ST	ST-L	Ti	Ti-L	ST-L	Ti	Ti-L
Dual-zone automatic climate control		•			•		
Tri-zone automatic climate control			•	•		•	•
Second row air vents	•	•	•	•	•	•	•
Intelligent Key™ with push button engine start	•	•	•	•	•	•	•
Approach unlock & walkaway lock	•	•	•	•	•	•	•
Remote engine start				•			•
Memory system (driver seat & door mirrors)				•			•
Automatic LED headlights	•	•	•	•	•	•	•
Automatic rain-sensing front wipers	•	•	•	•	•	•	•
High Beam Assist	•	•			•		
Adaptive Driving Beam headlights			•	•		•	•
Power adjustable, power folding, heated door mirrors	•	•	•		•	•	
Power adjustable, power folding, heated door mirrors with tilt to reverse				•			•
Motion sensing power tailgate with position memory			•	•		•	•
Built-in rear door sunshades			•	•		•	•
Automatic dimming borderless rear view mirror		•			•		
Intelligent Rear View Mirror			•	•		•	•
Capless fuel filler door	•	•	•	•	•	•	•

Audio and connectivity							
12.3" touchscreen display	•	•	•	•	•	•	•
Wireless Apple CarPlay®^ & wireless Android Auto™^A	•	•	•	•	•	•	•
NissanConnect - Connected Car Services	•	•	•	•	•	•	•
Wireless smartphone charger°	•	•	•	•	•	•	•
Bluetooth™ phone & audio streaming	•	•	•	•	•	•	•
6 speaker audio system	•	•	•		•	•	
Bose®P 10 speaker premium audio system				•			•
Active noise cancelling					•	•	•
AM/FM radio and DAB+ digital radio	•	•	•	•	•	•	•
4 USB   instrument panel (data & charge): 2x USB-C   second row (charge only): 2x USB-C	•	•	•	•	•	•	•
2 12V outlet (1 x instrument panel, 1 x cargo area)	•	•	•	•	•	•	•

Interior							
Steering wheel – urethane	•						
Steering wheel – leather-accented*		•	•	•	•	•	•
Tilt & telescopic steering wheel adjustment	•	•	•	•	•	•	•
Heated steering wheel				•			•
Ambient interior lighting – console tray			•			•	
Ambient interior lighting – console tray & door trim				•			•
Butterfly opening centre console	•	•	•	•	•	•	•
Front row sun visors with illuminated vanity mirrors	•	•	•	•	•	•	•
Divide-N-Hide configurable cargo system		° (5-seat only)	•	•	•	•	•
Cargo area removable tonneau cover	•	•	•	•	•	•	•
Cargo area light	•	•	•	•	•	•	•
4 cargo tie-down hooks	•	•	•	•	•	•	•

Seating							
5-seat configuration (2:3)	•	•	•	•	•	•	•
7-seat configuration (2:3:2)	° (4x4 only)	° (4x4 only)					
6-way manually adjustable driver seat (including 2-way power lumbar)/4-way manually adjustable passenger seat	•						
10-way power adjustable driver/passenger seat (including 2-way power lumbar)		•	•	•	•	•	•
Heated front seats		•	•	•	•	•	•
Heated second row outboard seats				•			•
60/40 split fold second row seat with manual recline and centre armrest	•						
40/20/40 split folding second row seat with manual recline, centre pass-through or centre armrest	° (7-seat only)	•	•	•	•	•	•
Sliding second row seats	° (7-seat only)	•	•	•	•	•	•
Second row child restraint anchorage (2 x ISOFIX outboard seats, 3 x top tether all seats)	•	•	•	•	•	•	•

Nissan X-TRAIL specifications

	e-POWER						
	ST	ST-L	Ti	Ti-L	ST-L	Ti	Ti-L
Trim							
Seat trim – cloth	•						
Seat trim – genuine leather-accented*		•	•		•	•	
Seat trim – quilted Nappa leather-accented*				•			•
Front seatback pockets	•	•	•	•	•	•	•
Exterior							
Body colour door handles	•	•	•	•	•	•	•
V-motion front grille with silver accent	•	•	•	•			
V-motion front grille with black accent					•	•	•
Silver roof rails		•	•	•	•	•	•
Black side moulding	•	•			•		
Chrome side moulding			•	•		•	•
Grey lower front and lower rear fascia	•	•			•		
Silver lower front and lower rear fascia			•	•		•	•
Body colour roof (with body colour rear spoiler & black shark fin antenna, door mirrors)	•	•	•	•	•	•	•
Black painted roof*- (with black rear spoiler, shark fin antenna and door mirrors)			◦	◦		◦	◦
Black door mirrors							
e-POWER & e-4ORCE tailgate badge					•	•	•
Exterior – lighting							
LED headlights	•	•	•	•	•	•	•
LED tail lights	•	•	•	•	•	•	•
LED daytime running lights	•	•	•	•	•	•	•
LED high mounted stop light	•	•	•	•	•	•	•
LED turn signal in door mirrors	•	•	•	•	•	•	•
Exterior – wheel & tyre							
17" alloy wheels with 235/65 R17 tyres	•						
18" alloy wheels with 235/60 R18 tyres		•			•		
19" alloy wheels with 235/55 R19 tyres			•	•		•	
20" alloy wheels with 255/45 R20 tyres							•
Exterior – glass							
Privacy glass (second row & rear windows)		•	•	•	•	•	•
Tilt & slide power sunroof with panoramic glass roof			•	•		•	•
Exterior paint							
Everest White (QBE)	•	•	•	•	•	•	•
Scarlet Ember (NBL)	•	•	•	•	•	•	•
Diamond Black* (G4I)	■	■	■	■	■	■	■
Gun Metallic* (KAD)	■	■	■	■	■	■	■
Deep Ocean Blue* (RCJ)	■	■	■	■	■	■	■
Champagne Silver* (KAY)		■	■	■	■	■	■
Ceramic Grey* (KBY)		■	■	■	■	■	■
Everest White with black roof- (XKJ)			■	■		■	■
Deep Ocean Blue with black roof*- (XHQ)			■	■		■	■
Ceramic Grey with black roof*- (XEX)			■	■		■	■
Champagne Silver with black roof*- (XEW)						■	■
Ownership							
Up to 10 year / 300,000 kilometre service activated warranty** otherwise; 5 year unlimited kilometre warranty**	•						
Up to 10 year / 300,000 kilometre service activated roadside assist³ otherwise; 1 year unlimited kilometre roadside assist³	•						
5 Year Flat Price Service Schedule <sup>M</sup>	•						

•

Standard

Not available

◦

Option

■

Premium Paint

Nissan X-TRAIL specifications

Choose your exterior paint colour



Everest White



Scarlet Ember



Gun Metallic<sup>#</sup>



Diamond Black<sup>#</sup>



Champagne Silver<sup>#</sup>



Ceramic Grey<sup>#</sup>



Deep Ocean Blue<sup>#</sup>



Everest White with black roof<sup>#~</sup>



Champagne Silver with black roof<sup>#~</sup>



Ceramic Grey with black roof<sup>#~</sup>



Deep Ocean Blue with black roof<sup>#~</sup>

Wheel and tyre options



17" alloy wheel  
Standard on ST grades



18" alloy wheel  
Standard on ST-L grades



19" alloy wheel  
Standard on Ti grades  
Standard on Ti-L 2.5L



20" alloy wheel  
Standard on Ti-L e-POWER

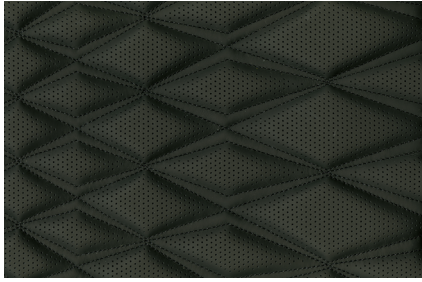
## Choose your interior trim



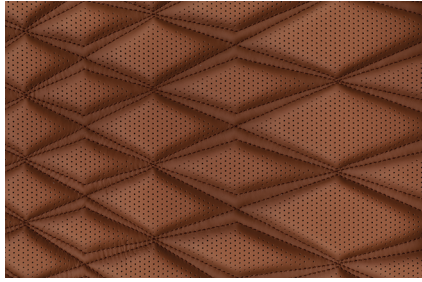
Light charcoal seat trim.  
Available on ST.



Black genuine leather-accented\* seat trim.  
Available on ST-L & Ti



Black quilted Nappa leather-accented\* seat trim.  
Available on Ti-L.



Chestnut quilted Nappa leather-accented\* seat trim.  
Available on Ti-L.

<sup>Q</sup> Torque figures are quoted independently for front and rear electric motors respectively and cannot be added together.

<sup>Δ</sup> Figures tested in accordance with ADR81/02 (Combined Test, Urban, Extra Urban). Figures stated for the purposes of comparison amongst vehicles only and may not reflect real world driving results. Actual fuel consumption and CO2 emissions depends on factors such as traffic conditions, vehicle condition, how you drive and any accessories fitted.

<sup>Q</sup> Gross Vehicle Mass is the maximum loaded mass of a vehicle.

<sup>†</sup> Kerb mass is the unladen mass of the vehicle with full tank of fuel without any accessories fitted.

<sup>‡</sup> Towing capacity is subject to towbar/towball capacity and is based on the fitment of a Genuine Nissan towbar. Towing capacity figure described is a maximum figure. Actual towing capacity depends on the laden mass of the vehicle, driving conditions, fitment of any accessories or towing equipment limitations including the maximum towball download.

<sup>+</sup> ProPILOT cannot prevent collisions. It is the driver's responsibility to be in control of the vehicle at all times. Always monitor traffic conditions and keep both hands on the steering wheel. System operates only when lane markings are detected. Does not function in all weather, traffic and road conditions. System has limited control capability and the driver may need to steer, brake or accelerate at any time to maintain safety. See Owner's Manual for safety information.

<sup>^</sup> CarPlay is a registered trademark of Apple Inc. Android Auto is a trademark of Google LLC. Compatible device required. Wired connections require a USB connection.

<sup>o</sup> Compatible device required.

<sup>o</sup> The Bluetooth™ word mark is owned by The Bluetooth SIG, Inc. Functionality and compatibility will vary depending on the device.

<sup>o</sup> Bose is a registered trademark of Bose Corporation.

<sup>\*</sup> Leather-accented features and upholstery may contain synthetic material. Minor trim variations may occur from time to time.

<sup>#</sup> Premium paint available at extra cost. In some cases, the printed colours may vary from the actual paint colours.

<sup>~</sup> Black painted roof available on Ti & Ti-L models at additional cost.

<sup>\*\*</sup> Whichever occurs first, when servicing at authorised Nissan dealers. Where vehicle is not serviced through Nissan or ceases to be serviced at Nissan, additional years will not be added so 10 year/300,000km warranty (whichever occurs first) may not apply. Warranty protection will remain 5 year/unlimited km warranty, plus any additional service activated years previously added. Conditions apply. Full terms at [Nissan.com.au/warranty](https://www.nissan.com.au/warranty).

<sup>Q</sup> When servicing at authorised Nissan dealers. Where vehicle is not serviced through Nissan or ceases to be serviced at Nissan, additional years will not be added, so 10 year/300,000km roadside assist (whichever occurs first) may not apply. Roadside assist duration will remain as 1 year/unlimited kilometre roadside assist, plus any service activated years previously added. Conditions apply. Full terms at [Nissan.com.au/roadsideassistance](https://www.nissan.com.au/roadsideassistance).

<sup>M</sup> Ask your Nissan Dealer to explain exactly what items are covered in each Scheduled Service. Applies for the first 5 services or 5 years, whichever occurs first. Some exclusions apply. Ask your Nissan Dealer or view full terms at [Nissan.com.au/service](https://www.nissan.com.au/service).



FINANCIAL  
SERVICES

For more information please visit [nissan.com.au/owners](https://www.nissan.com.au/owners), ask your Nissan Dealer or phone 1800 035 035 during normal AEST business hours.

All illustrations, information and specifications presented and referred to in this spec sheet were correct at the time this spec sheet was approved for printing. The colours in the photographs may vary from actual colours. Nissan Motor Co (Australia) Pty. Ltd. reserves the right, subject to the laws of Australia and/or the regulations of any competent authority which may apply from time to time, at its discretion at any time and without prior notice, to discontinue or change the models, features, specifications, designs and prices of the products referred to in this brochure and any optional equipment therefore without incurring any liability whatsoever to any purchaser or prospective purchaser of any such products. Some of the items referred to herein are optional at extra cost. Some options may be required in combination with other options. Always consult your Nissan Dealer for the latest information on models, specifications, features, prices, options and availability. Nissan Motor Co (Australia) Pty. Ltd. ACN 004 663 156. Updated January 2026.



NissanAustralia



@nissanAustralia



NissanAustralia