



PATROL





# THE NISSAN PATROL

The iconic Nissan Patrol has always been the pinnacle of versatility. It is now also the pinnacle of luxury. The new Nissan Patrol brings its rugged reputation and a refinement that focuses on the details. Stylish additions like 18" wheels, a sophisticated grille and LED front and rear lamps, makes this 4x4 feels as comfortable in the driveway as it does on the mountain. With innovative safety features and Nissan Intelligent Mobility technologies, the new Nissan Patrol also brings capability to a new and luxurious level.



Ti-L model shown in Brilliant Silver



## NISSAN INTELLIGENT DRIVING OFF-ROAD CAPABILITY

The Nissan Patrol brings with it the technology, design and forethought needed to tackle almost any terrain. For instance, the Intelligent 4X4 technology allows the driver to switch between a range of different modes including sand, on-road, rock and snow with the push of a button. Hill Start Assist and Hill Descent Control systems give the driver the utmost confidence to take the road less travelled. When the road gets that much tougher, the driver can engage the electronic rear differential lock with the push of a button. When it comes to the Nissan Patrol, capability is everything.

**4H**  
Stay on track despite the best efforts of slippery surfaces.

**4L**  
Soft surfaces, mud, steep inclines, the Patrol can do it all.

**HILL DESCENT CONTROL**  
Ensure you command the downhill rather than the other way around with the advanced Hill Descent Control and do it all with the simple push of a button.



**REAR DIFFERENTIAL LOCK**  
The electronic rear diff lock allows you to gain traction in even the toughest conditions with the simple push of a button.

**SAND**  
Tackle sandy conditions with ease and confidence.

**SNOW**  
Snow is no match for the Patrol.

**ON ROAD**  
Get the most out of your on road experience.

**ROCK**  
Adjust throttle characteristics to crawl over rocks with ease.



## HYDRAULIC BODY MOTION CONTROL

The Hydraulic Body Motion Control (HBMC) suspension system has been implemented to ensure remarkably low body roll when powering through corners and provides better traction through rough terrain. HBMC plays both the role of shock absorbers and stabiliser bars, allowing for full wheel travel, meaning your wheels will stay firmly on the ground when you're off the beaten track. The HBMC system provides this balance and superior cornering by monitoring force and then distributing pressure to either the outer or inner double wishbone suspension system. This HBMC system delivers a smoother ride, safer cornering and overall enhanced stability.



# POWER AND PERFORMANCE

With power comes performance. That's exactly what the Nissan 5.6L V8 Direct Injection engine delivers, sporting an impressive 298kW of power and 560Nm of torque. At ease off the beaten track, the Nissan Patrol also features Electronic rear diff lock, Hill Descent Control, Hill Start Assist and Off-road monitor. While 3,500kg\* of braked towing capacity and seven-speed automatic transmission ensures you're equipped to go anywhere.

\*Towing capacity is subject to towbar/towball capacity and is based on the fitment of a Genuine Nissan towbar. Towing capacity figure described is a maximum figure. Actual towing capacity depends on the laden mass of the vehicle, driving conditions, fitment of any accessories or towing equipment limitations including the maximum towball download.





#### LOOK OUT BELOW

In Reverse, the display helps you see what's directly behind you, while the overhead view helps with smaller objects that might be hidden below your window.

#### COMPLETE THE PICTURE

Located under your driver's side mirror, this camera helps round-out your virtual 360° bird's eye view, whether you're in Drive or Reverse.

#### SPARE YOUR WHEELS

In Drive or Reverse, you can push the camera button to switch-out the overhead for a side view. A great help for seeing how close you are to the kerb.

#### DON'T BUMP YOUR NOSE

In Drive, the display gives you both a front and overhead view, so you know just how far to pull up - without going too far.

## INTELLIGENT AROUND VIEW® MONITOR 360 WAYS TO MAKE PARKING EASIER THAN EVER

The Intelligent Around View® Monitor<sup>1</sup> uses four cameras to give you a virtual composite 360° bird's-eye view of your vehicle, with selectable split-screen close ups of the front, rear, and kerbside views, so you can get a better look. Moving Object Detection<sup>2</sup> can detect moving objects near the vehicle, and can give you a visual and audible alert.

<sup>1</sup>Driver's aid only and should not be used as a substitute for safe driving practices. Always monitor your surroundings when driving.



## INTELLIGENT EMERGENCY BRAKING

Using radar technology to monitor the velocity and distance of up to two vehicles ahead, Intelligent Forward Collision Warning can give you audible and visual display warnings to help you know when to reduce your speed. If required, the Intelligent Emergency Braking<sup>3</sup> will apply automatic braking to avoid or reduce the damage caused by the collision.

Ti-L model shown in Brilliant Silver



# NISSAN INTELLIGENT DRIVING EMPOWER YOUR SAFETY IN THE NISSAN PATROL

The Nissan Patrol comes equipped with a huge array of technologies that will ensure your driving safety. Across the range, you'll find technologies like Intelligent Cruise Control, Intelligent Forward Collision Warning, Intelligent Lane Intervention, and Intelligent Blind Spot Warning.



## INTELLIGENT REAR VIEW MIRROR

Unique to the Ti-L grade, the Intelligent Rear View Mirror has been innovatively designed to help drivers "see around" second and back row interior obstacles, improving visibility and helping maintain a clear view of the conditions and traffic behind them.



## REAR CROSS TRAFFIC ALERT<sup>1</sup>

Rear Cross Traffic Alert can help you be more aware of your surroundings and back out of a space more safely. With radar senses watching the rear, your Patrol can detect and warn you about cars approaching from either side.



## INTELLIGENT BLIND-SPOT INTERVENTION

Smart technology like the innovative Blind Spot Warning and Intervention system detects vehicles in your blind spot and alerts you via an audible alarm. If, for instance you continue to change lanes and the car in your blind spot also continues to proceed, the system will initiate, gently braking one side of the vehicle, bringing your vehicle back to your original lane position, well out of harm's way.



Ti-L model in Brilliant Silver. <sup>1</sup>Drivers' aids only and should not be used as substitutes for safe driving practices. Always monitor your surroundings when driving.



# TECHNOLOGY TO MAKE LIFE EASY

Reach new destinations as the Nissan Patrol gives you technology you need and more. Technologies that include the practical, the useful, and the almost indulgent. Technologies such as the Satellite Navigation System with 8" colour touch screen, Bluetooth® hands free and audio streaming, 8-inch multi-format screens\* in the second row, tri-zone climate control, Intelligent Key® with push button start and remote keyless entry.

## 8" COLOUR TOUCH SCREEN

With so much information, the 8" colour touch screen with satellite navigation puts everything you need at an arms reach – helping you get to where you're going.



Ti-L model interior \*Ti-L model only.

## BOSE® PREMIUM AUDIO SYSTEM

Thirteen speakers strategically placed throughout the interior provide a rich sound that upgrades your listening experience. The Bose® premium sound system is custom-tuned by Bose® engineers to take advantage of the unique interior acoustics inside the Nissan Patrol®.





# Ti

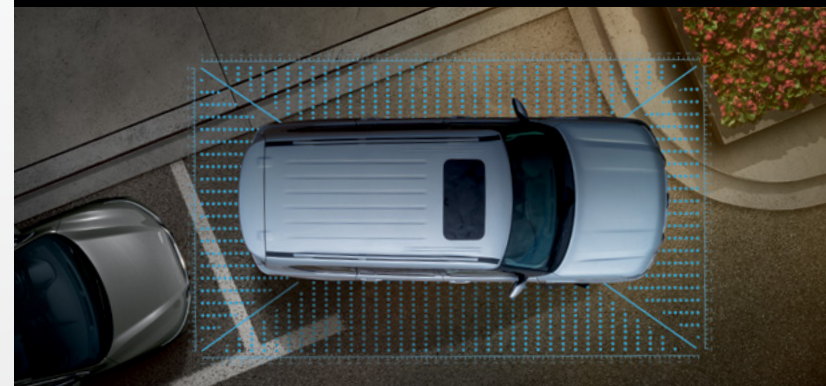


- VK56VD 5.6 litre VVEL V8 petrol engine with 298kW and 560Nm
- 7 speed automatic transmission with Manual Mode and Adaptive Shift Control (ASC)
- Intelligent 4X4 with electronic 4WD selection
- Sports bumper
- Rear Helical Limited Slip Differential
- Hill Descent Control (HDC)
- Hill Start Assist (HSA)
- Off road monitor
- Front and rear parking sensors
- 18" alloy wheels
- Heated door mirrors with power adjustment/folding & integrated indicator lights
- Audio system with CD/DVD, AM/FM radio, MP3 and USB / iPod\* connectivity with Bluetooth® audio streaming
- Satellite Navigation with 8" touch screen display
- 6 speakers
- Bluetooth® handsfree phone system with steering wheel controls
- Tri-zone climate control air conditioning
- 8 seat capacity
- 10-way driver seat with power slide/recline/height/tilt/lumbar adjustment
- 8-way front passenger seat with power slide/recline/height/tilt adjustment
- Tyre Pressure Monitoring System (TPMS)
- Hydraulic Body Motion Control suspension (HBMC)
- Leather accented seat trim†
- Automatic headlights
- LED front fog lights
- Follow Me Home headlight function
- Intelligent Key™ with remote keyless entry
- Intelligent Around-View Monitor with Moving Object Detection
- Intelligent Emergency Braking
- Intelligent Forward Collision Warning
- Rear Cross Traffic Alert
- Intelligent Cruise Control
- Intelligent Lane Intervention
- Lane Departure Warning
- Blind Spot Warning
- Intelligent Blind Spot Intervention

\*iPod is a registered trade mark of Apple Inc. †Leather accented features and upholstery may contain synthetic material.



Ti INTERIOR SHOWN



INTELLIGENT AROUND VIEW MONITOR



SATELLITE NAVIGATION WITH 8" COLOUR TOUCH SCREEN



BLUETOOTH® HANDSFREE PHONE/AUDIO SYSTEM CONTROLS



LEATHER ACCENTED\* SEAT TRIM



# Ti-L



## All features of the Ti plus/or:

- 7 seat capacity
- Driver's seat memory with two settings, including side mirrors and steering column position
- First row centre console cool box
- 13 premium BOSE® speakers
- Two second row seat 8" entertainment screens with headphones and remote control
- Intelligent Rear View Mirror (I-RVM)
- Puddle illumination light
- Power operated tailgate
- Roof rails
- Sunroof (electric one-touch power tilt & slide) with Privacy Glass
- Heated and cooled front seats
- Tilt and telescopic electronically adjustable steering column
- Premium bumper



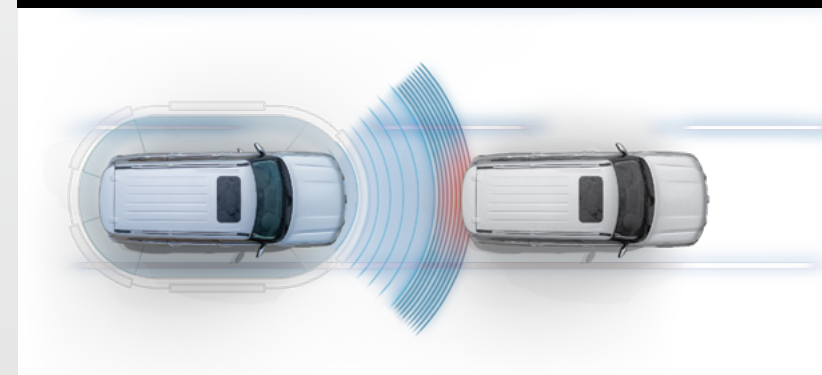
TI-L INTERIOR SHOWN



13 PREMIUM BOSE® SPEAKERS



INTELLIGENT CRUISE CONTROL



FORWARD COLLISION WARNING



HEATED AND COOLED FRONT SEATS



CHOOSE YOUR COLOUR



Brilliant Silver (K23)\*



Black Obsidian (KH3)\*



Gun Metallic (KAD)



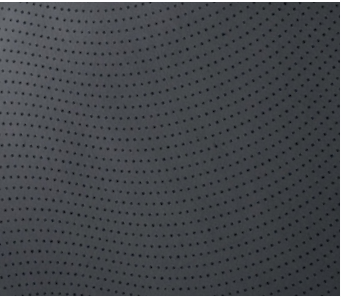
Hermosa Blue (BW5)\*



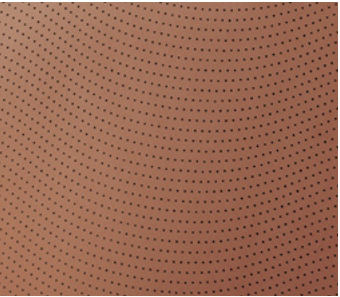
Moonstone White (QAC)\*

In some cases, the printed colours may vary from the actual paint colours.

INTERIOR TRIM



Interior black leather accented seat trim<sup>1</sup>



Interior light tan leather accented seat trim<sup>1</sup> (forward order only)

Minor trim variations may occur from time to time. <sup>1</sup>Leather accented features and upholstery may contain synthetic material.

A complete ownership experience to help you get the most out of your Nissan. It includes the following:

NISSAN CAPPED PRICE SERVICE

All Nissan vehicles first registered from 1 January 2018 are eligible for Nissan Capped Price Service\*. As part of this servicing program, we've capped the maximum price you'll pay for the first six services according to your vehicle's service schedule.

5 YEAR/UNLIMITED KILOMETRE WARRANTY

Receive assurance with a 5 year/ unlimited kilometre warranty.<sup>2</sup>

5 YEARS ROADSIDE ASSISTANCE

No matter where you're planning to journey, you'll have the peace of mind of knowing that if you lock your keys in the car, have a flat tyre or battery, or run out of fuel, we'll help get you back on the road at no charge<sup>3</sup>.

FACTORY-TRAINED TECHNICIANS

Using dedicated diagnostic equipment and Nissan Genuine Parts they'll keep your vehicle in top condition.

NISSAN GENUINE ACCESSORIES

Your Nissan Dealer can show you a variety of Nissan Genuine Accessories to protect, enhance and personalise your Nissan Patrol.

FINANCIAL SERVICES

Choose from a range of finance options at very competitive rates and terms, as well as various insurance solutions to protect you and your vehicle.

\*Ask your Nissan Dealer to explain exactly what items are covered in each Scheduled Service. Applies for up to 6 years/120,000km (whichever occurs first). Some exclusions apply. Ask your Nissan Dealer or visit [nissan.com.au/service](http://nissan.com.au/service) to find out more and for full terms and conditions. <sup>2</sup>New Vehicle Warranty expires 60 months from date of first registration. Conditions apply. See [nissan.com.au](http://nissan.com.au) for more details. NOTE: Our goods come with guarantees that cannot be excluded under the Australian Consumer Law. You are entitled to a replacement or refund for a major failure and compensation for any other reasonably foreseeable loss or damage. You are also entitled to have the goods repaired or replaced if goods fail to be of acceptable quality and the failure does not amount to a major failure. <sup>3</sup>Terms and conditions apply, please visit [nissan.com.au/roadsideassistance](http://nissan.com.au/roadsideassistance).



SPECIFICATIONS

	Ti	Ti-L
Engine		
VK56VD - 5.6L VVEL V8 petrol engine	●	●
Power - 298 kW @ 5,800 rpm	●	●
Torque - 560 Nm @ 4,000 rpm	●	●
Direct Injection Gasoline (DIG)	●	●

Drivetrain		
7-speed automatic transmission with Manual Mode & Adaptive Shift Control (ASC)	●	●
Intelligent 4x4 with Hill Descent Control	●	●
Hill Start Assist	●	●

Suspension/Steering		
Hydraulic Body Motion Control suspension (front and rear) (HBMC)	●	●
Independent double wishbone coil sprung front and rear suspension	●	●
Front and rear ventilated disc brakes	●	●
Electronic rear differential lock	●	●
Rear Helical Limited Slip Differential (LSD)	●	●
Vehicle speed sensitive power steering	●	●

Wheels/Tyres		
18" x 8J alloy wheels	●	●
265/70R18 tyres	●	●
Full size alloy spare wheel	●	●

Dimensions (mm)		
Overall length	5175	
Overall width	1995	
Overall height	1940	1955
Wheelbase	3075	
Track front/rear	1695/1695	
Ground clearance	273	
Approach angle (degrees)	34.4	28.0
Departure angle (degrees)	26.3	

	Ti	Ti-L
Capacities		
Seating capacity	8	7
Fuel tank (litres)	140	
Maximum towing capacity* - braked (kg)	3500	
Maximum towing capacity* - unbraked (kg)	750	
Gross front axle capacity (kg)	1650	
Gross rear axle capacity (kg)	2030	
Gross combined mass (kg)	7000	
Maximum towball download (kg)	350	

Weights (kg)		
Tare mass	2715	2750
Gross Vehicle Mass#	3500	
Carrying capacity	785	750

Fuel Economy	
Fuel consumption† (L/100km)	14.4

Not available

●

Standard

†Figures tested in accordance with ADR81/02 (combined test). Figures stated for the purposes of comparison amongst vehicles only. It is unlikely that this fuel consumption figure will be achieved in real world driving conditions. Actual fuel consumption depends on factors such as traffic conditions, vehicle condition, how you drive and any accessories fitted.

\*Towing capacity is subject to towbar/towball capacity and is based on the fitment of a Genuine Nissan towbar. Towing capacity figure described is a maximum figure. Actual towing capacity depends on the laden mass of the vehicle, driving conditions, fitment of any accessories or towing equipment limitations including the maximum towball download.

#GVM = Gross Vehicle Mass. GVM is the maximum laden mass of a motor vehicle.



For more information please ask your Nissan Dealer.

All illustrations, information and specifications presented and referred to in this brochure were correct at the time this brochure was approved for printing. The colours in the photographs may vary from actual colours. Nissan Motor Co (New Zealand) Pty. Ltd. may at its discretion at anytime and without prior notice discontinue or change the models, features, specifications, designs and prices of the products referred to in this brochure and any optional equipment without incurring any liability whatsoever to any purchaser or prospective purchaser of any such products. Always consult your Nissan Dealer for the latest information on models, specifications, features, prices, options and availability. Nissan Motor Co (New Zealand) Pty. Ltd. Printed February 2022. NIS4292





Nissan Intelligent Mobility guides everything we do. At Nissan, we use new technologies to transform cars from mere transportation. Together the journey is more confident, connected, and exciting. Whether it is cars that share the task of driving or highways that charge your EV as you go along, it's all in the very near future. And it's a future already taking shape in the Nissan you drive today.



NissanNZ



@nissan\_nz



NZNissan

[nissan.co.nz](http://nissan.co.nz)